



Five Little Ducks in the Bunnies Class

Children throughout the school enjoyed rhymes and poetry on National Poetry Day.

Today the Robins class shared their love of poetry in their excellent class assembly which was enjoyed by their parents and children throughout the school.

*'I loved that assembly' Year Two child.*



Robins' Assembly

MAKE YOURSELF A FRESH **BURGER**

**SCHOOL CENSUS DAY**  
Thursday 5th October 2017

**Beef or Quorn Burger in a Bun**

Top as you like  
Choosing from Lettuce, Tomatoes, Cucumber, Onions, Cheese, Mayo or Tomato Relish

Fries

Coleslaw and Baked Beans

Ice Cream

Fresh Fruit

Chartwells

## School Census Day

Next Thursday, 5<sup>th</sup> October is an important day for schools as the Local Authority collect information which is used to calculate how much money to give us for the next financial year.

To help ensure we have the money we need to help our children...

*Please...Please....Please...Please*

.... can your child have their free school meal next Thursday 5<sup>th</sup> October ; there is a special menu on that day . the children last year loved build a burger day!

.... if you have not informed us that you are a 'forces family' please could you let the office know

## THANK YOU

To everyone who donated their Sainsbury's Vouchers to school. We are absolutely thrilled with the equipment.

We have teepees for our outdoor learning, brand new child sized tools for gardening, bean bags, hoops and much much more.... this will benefit all our children and enhance our lessons, lunchtimes and after school clubs.



Sainsbury's

**Active Kids 2017**

Eat well • Move well • Live well

**School Funding**

Overall, parents are increasingly concerned about the cost of sending children to state school, compared to 2016. Parents making contributions to schools through PTA volunteering or to a school fund is nothing new. Schools need to work in partnership with parents to address local concerns and take parents' views into account when making decisions.



We always examine any reports that are published nationally in order to identify ways we can further support our pupils and their families. Our response to this report is that our commitment to you ensures that sending your child to school is not a drain on your household budget. Please look at our responses to each point raised in the report.

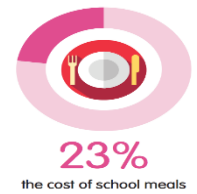
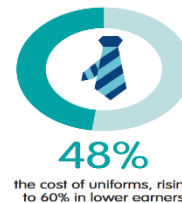
Parents are concerned about the cost of sending their kids to school.

**78%** believe the cost of sending their child to school is increasing

**55%** agree this is a concern

**We never charge for school trips.**

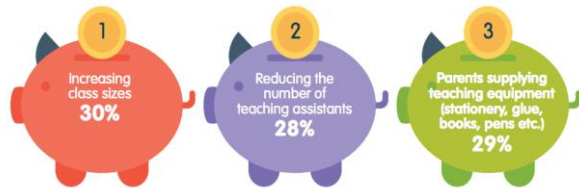
Which costs are parents most concerned about?



**Cost-cutting options**

During the recent elections it was reported that schools may need to take measures to make ends meet. PTA UK asked parents what cost-cutting measures had been suggested and implemented by their schools. **Here's what the school suggested vs what the parents would most strongly support:**

Top three suggestions made by school according to parents:



Top three supported by parents:



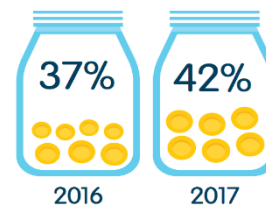
This is the one both parents and teachers agreed on

We regularly review our suppliers to ensure that the uniform we sell which has our logo, is best value for money i.e. of the lowest possible cost for a high quality that ensures the uniforms wear well. We also have uniform colours that are easy to source from supermarkets and other lower cost outlets.

**We never ask for direct contributions to school funds.**  
In addition, we limit fund raising events across the year. Those we have are carefully chosen to support the children's PSHE\* and SMSC\* learning. We never keep lists of the names of children who have contributed and children can take part irrespective of contributions being paid.



We have maintained our commitment to small class sizes and a highly trained teaching assistant in every class. We also employ additional staff to provide specialist and focused support where needed.



More parents have been asked to donate to the school fund this year  
On average, £8.90 per month is donated by all parents.\*

\* PSHE - Personal, Social and Health Education \* SMSC - Spiritual, Moral, Social and Cultural

Diary Dates	
Thursday 5 <sup>th</sup> October	Moles Class assembly
Friday 6 <sup>th</sup> October	Hedgehogs Assembly
9 <sup>th</sup> - 13 <sup>th</sup> October	Reception to Year Two Parental consultations- individual details will be provided
Thursday 12 <sup>th</sup> October	Owls Class Assembly
Thursday 12 <sup>th</sup> October	Maths Information Meeting For Parents 2pm And 5pm
Friday 13 <sup>th</sup> October	Bumblebees Class assembly
Tuesday 17 <sup>th</sup> October	Flu vaccinations
Thursday 19 <sup>th</sup> October	Butterflies Assembly
Friday 20 <sup>th</sup> October	INSET DAY SCHOOL CLOSED FOR CHILDREN
Saturday 21 <sup>st</sup> October to Sunday 29 <sup>th</sup> October	HALF TERM HOLIDAY